

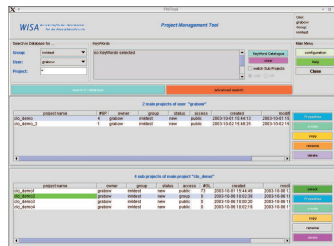
Forschungszentrum Karlsruhe in der Helmholtz-Gemeinschaft

Forschungszentrum Karlsruhe GmbH, Postfach 36 40, D-76021 Karlsruhe

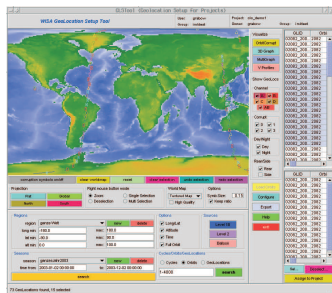
R. Lutz(2), U. Grabowski(1), T. Beckmann(3), T. v. Clarmann(1), H. Fischer(1), B. Funke(4), N. Glatthor(1), M. Höpner(1), S. Kellmann(1), M. Kiefer(1), A. Linden(1), M. Milz(1), S. Ressel(2), T. Steck(1), G.-P. Stiller(1), G.M. Tsidu(1), D.Y. Wang(1)

1: IMK, Forschungszentrum Karlsruhe, Germany; 2: IAI, Forschungszentrum Karlsruhe, Germany; 3: on leave from 2;
4: IAA, CSIC, Granada, Spain

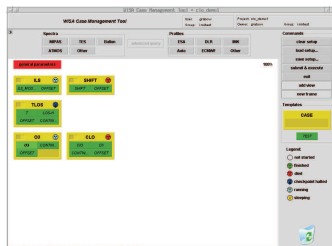
The IMK MIPAS Retrieval Processor Environment



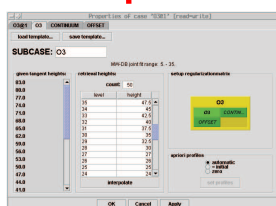
The user projects are accessed through a general Project Management Tool, work groups can be created to structure the projects based on scientific targets.



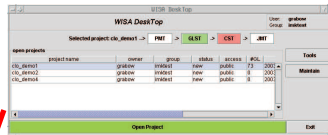
A Geolocation Selection Tool is provided to choose the geolocations to process on a world map in different projections, selectable by a set of different criteria, used for both the spectra and initial gas profile selection.



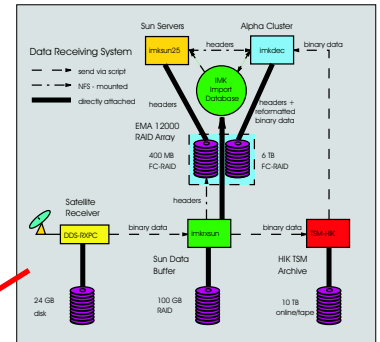
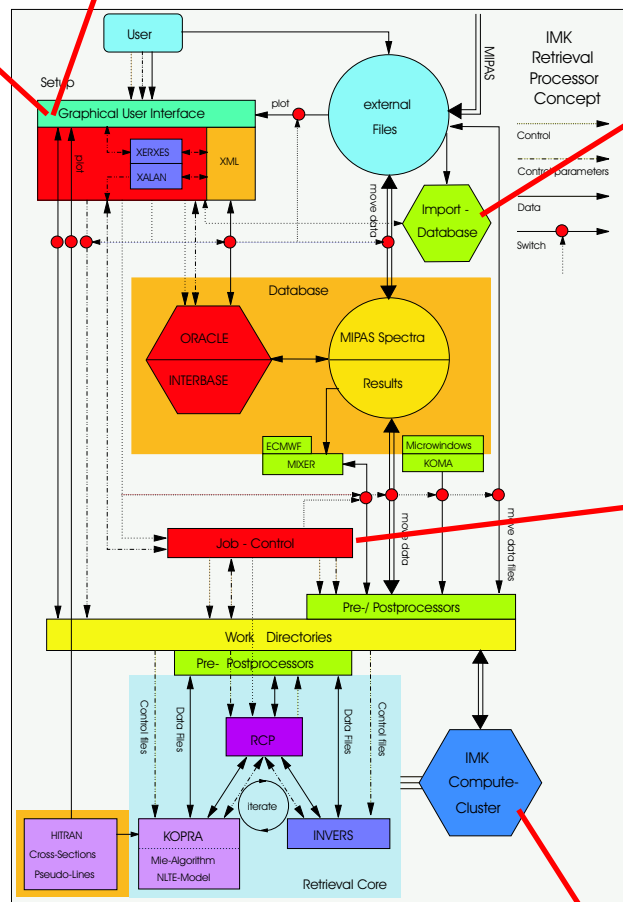
An interactive Case Workbench allows to create a set of cases for different target retrieval parameters, freely arrangeable to control which cases can be processed in parallel and which cases have to wait for intermediate results used as initial guess or fixed trace gas input.



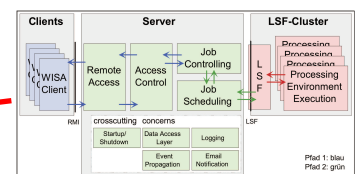
The individual cases can then be specified in detail in a Case Setup Tool.



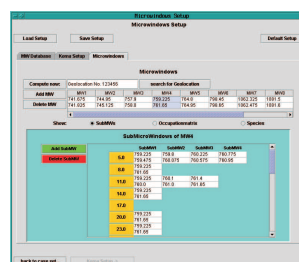
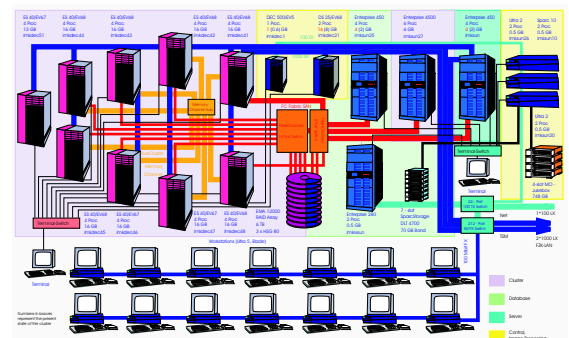
The Workflow Manager serves as a convenient tool to keep the user on track.



The data dissemination system (DDS) retrieves original ESA data, extracts header information and stores this data into the import database. The data is then sent to the TSM archive waiting for processing.



The finished setup is then submitted to the Job Management Tool, which automatically sends the necessary jobs to the IMK Compute Cluster, provides status information back to the Case Workbench to inform the user on how his jobs proceeds, and retrieves the result from the cluster to be inspected by the user and finally fed into the result database.



The Microwindow Setup Tool can be used to inspect, adapt, or create a tailored micro window selection for a specific case.